

CERTIFICATION

This torque wrench as calibrated at the factory, is certified to meet the current ASME specification. Additionally, all wrenches are calibrated on a torque standard traceable to the National Institute of Standards and Technology (N.I.S.T.).

CONVERSION TABLE

To Convert From	To	Multiply By
in. oz.	in. lb.	0.06250
in. lb.	in. oz.	16
in. lb.	ft. lb.	0.08333
in. lb.	cmkg	1.15212
in. lb.	mkg	0.01152
in. lb.	Nm	0.11298
in. lb.	dNm	1.12984
ft. lb.	in. lb.	12
ft. lb.	mkg	0.13825
ft. lb.	Nm	1.35581
dNm	in. lb.	0.88507
dNm	Nm	0.1
Nm	dNm	10
Nm	cmkg	10.1971
Nm	mkg	0.10197
Nm	in. lb.	8.85074
Nm	ft. lb.	0.73756
cmkg	in. lb.	0.86796
cmkg	Nm	0.09806
mkg	in. lb.	86.7961
mkg	ft. lb.	7.23301
mkg	Nm	9.80665

FOR YOUR PERMANENT FILE

WRENCH MODEL NUMBER:

WRENCH SERIAL NUMBER:

For Warranty Claims, Contact CDI Torque Products
at (626) 965-0668.

LIMITED WARRANTY

The CDI Dial Torque Wrench Dual Scale Memory Needle is backed by a one year warranty. This warranty covers manufacturer defects and workmanship. The warranty excludes misuse, abuse and normal wear and tear. Exclusion is not allowed in some states and may not apply. This warranty gives you specific legal rights, and you may have other rights, which vary from state to state.



Please Recycle

IMPORTANT ENVIRONMENTAL NOTES:

1. This equipment may contain hazardous materials which can be harmful to the environment.
 2. Do not dispose of this equipment as municipal waste. Return it to the distributor or a designated collection center.
- Thank you for caring about our environment!

CDI TORQUE PRODUCTS

A Snap-on Specialty Tools Brand

19220 SAN JOSE AVENUE • CITY OF INDUSTRY, CA 91748 • USA
(626) 965-0668

Find other fine torque products at WWW.CDITORQUE.COM

Form 20-220-CDI
6/2010 Rev. B

OPERATION MANUAL

DIAL TORQUE WRENCH DUAL SCALE MEMORY NEEDLE



CDI TORQUE PRODUCTS

SAFETY MESSAGES



WARNING



Read operation manual completely before using torque instrument and store for future reference.



Wear safety goggles-both user and bystanders



- An out of calibration torque wrench can cause part or tool breakage
- Periodic re-calibration is necessary to maintain accuracy
- Do not exceed rated torque as overtorquing can cause wrench or part failure
- Do not use torque instrument to break fasteners loose



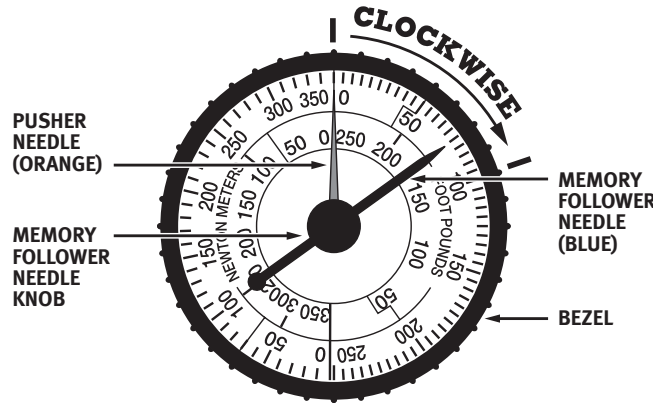
- Do not use cheater extension on the handle to apply torque
- Broken or slipping tools can cause injury.



CAUTION - RATCHET HEAD

Ratchet mechanism may slip or break if dirty, mismatched or worn parts are used, or direction lever is not fully engaged. Ratchets that slip or break can cause injury.

ADJUSTMENTS OF TORQUE SETTINGS



FOLLOWER NEEDLE DIAL

SETTING MEMORY FOLLOWER NEEDLE ON DUAL SCALE MODEL

Before using all models of dial torque wrenches, it is strongly suggested to cycle/operate them 3 times at full scale in the torque direction in which they will be used. *Dial torque wrenches must always be zeroed before use.*

To set orange pusher & blue follower needle for right-hand (CW) torquing:

1. Turn bezel in left-hand (CCW) direction until, blue memory follower needle contacts orange pusher needle.
2. Continue to turn bezel left-hand (CCW) until blue memory follower needle is lined up with **zero** (0) of outer graduation on portion of dial for IN.LB., FT.LB., METRIC readings.

3. Apply force on the wrench handle until blue follower needle reaches desired torque. When force is released orange pusher needle will return to **zero** and blue memory follower needle will remain at torque applied.

4. For repetitive torque operations (once the **zero** has been set as instructed above), the blue memory follower needle can be returned to **zero** by use of the follower needle knob. It is ready for the next operation.

5. **IMPORTANT** - When using the memory feature always make sure that the blue follower memory needle is on **zero** before torquing.

USE OF EXTENSIONS AND ADAPTERS

When using an extension or adapter (increasing the effective length of the torque wrench) the output torque value will change. To calculate the new torque output of the wrench use the following formula:

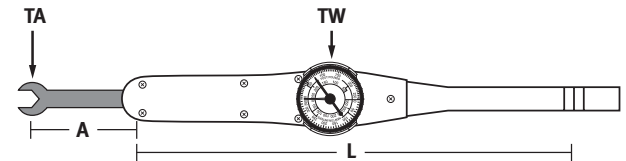
$$TW = \frac{TA \times L}{L + A}$$

TA = Torque exerted @ end of adapter

L = Distance between square drive and hand position

TW = Wrench scale reading

A = Length of adapter or extension



A number of variables can affect torque accuracy. These include the length of an adapter or extension, length of the wrench and variations in hand position on the wrench will affect the accuracy of the above calculation.

MAINTENANCE / SERVICE

1. The torque wrench's internal mechanism is permanently lubricated during assembly. **Do not attempt to lubricate the internal mechanism.**
2. Clean torque wrench by wiping. **Do not immerse.**
3. Store torque wrench in protective tube at its lowest torque setting. **Do not force handle below lowest setting.**